



*"ON THE OUTSIDE"*  
**TECHNICAL RIDER**

Updated 17.11.14

*Please find contact information at page 6.*

Panta Rei Dance Theater's "***On the outside***" is a live dance performance.

The company travels with 1 choreographer, 1 lighting designer, 1 sound technician and 6 performers.

Panta Rei Dance Theater carries its own costumes, set and props. The company requires that the presenter provide theatre lighting equipment, video projectors and cables, sound system and local crew.

The performance lasts 60 minutes. The room concept consists of 4 stages placed around in the performance area, with performers moving between the different stages. The audience moves around in between the stages, following the performance.

The following must be sent to Panta Rei Dance Theater good time in advance of the performance: Theater ground plan, a list of operational lighting, video projector specs and sound equipment specs.

### **1. STAGE REQUIREMENTS:**

The production is adjustable when it comes to stage size, however - the stage/performance area requirements that suit the production best are as follows:

a.) 18 meters wide and 18 meters deep performance area.

b.) 4 smaller stages/risers matching the following requirements:

\* Dance stage 1: 4m X 4m @ 80cm height

\* Band stage: 4m X 4m @ 40cm height

\* Dance/vocal stage: 2m X 4m @ 60cm height

\* Dance stage 2: 2m X 2m @ 90cm height

Steps/stairs are needed for all of the small stages. *Please see ground plan for info.*

c.) 7 pipes lighting and video projectors, 1 pipe for black backdrop, 1 pipe for white cyc.

d.) Ideal height for electrics are 7 meters.

*Please find production ground plan attached.*

### **2. MASKING & SOFTGOODS:**

Presenter agrees to provide black velour masking sufficient to mask the stage to the satisfaction of the Company technicians.

a.) 1 black, full stage width backdrop.

b.) Black skirting on all stages and steps.

c.) White gaffa outlining on all stages and steps.

### **3. FLOORING:**

In general: Preferably black, wooden flooring. Not concrete.

All nails must be removed, holes plugged and taped where necessary.

**4. HEATING:**

The stage area and dressing rooms must be heated to a minimum of 22 degrees Celsius, during both rehearsals and performances.

**5. LIGHTING:**

All lighting equipment and color gels are to be supplied by the presenter/venue. The venue must provide a computerized lighting with the possibility to program cues and effects. Expect about 4 hours of programming with company lighting designer. FOH position must be decided prior to set up.

Panta Rei Dance Theater wishes that the majority of the lights is hung and circuited according to the light plot provided by Panta Rei Dance Theater prior to the company's load-in.

*(Please clear details regarding this with Panta Rei Dance Theater in advance)*

The Presenter shall provide a complete house lighting system, including:

- a.) Enough dimmers and fixtures according to lighting plot.
- b.) Suitable cables for all fixtures
- c.) All color filters/gels as requested
- d.) 7 pipes lighting and video projectors, 1 pipe for black backdrop, 1 pipe for white cyc.

Panta Rei Dance Theater brings:

- Small worklights

*Please find lighting plot and instrument count attached.*

**6. VIDEO:**

The performance requires 2 video projectors with following or similar specs:

Video projector #1:

Minimum 7000 ANSI lumen, lens: TBD

Video projector #2:

Minimum 4000 ANSI lumen, lens: TBD

All cables must be provided. Controlled from FOH.

**7. SET & PROPS:**

Panta Rei Dance Theater brings the following:

- a.) Plastic leaves for dance stage 1
- b.) Cardboard boxes
- c.) 2 chairs
- d.) Installation above dance stage 2

## 8. SOUND

### PA-SYSTEM:

We need FOUR(4) groundstacks. These will be configured Far left- Left –Right- Far right

High quality 3- or 4- way system. . The system has to cover all over the audience area and be able to play at least 105 dB(A) undistorted sound at mixing position. The system must play the entire frequency range from 30 Hz to 20 kHz. No hum or other noise in the PA. The artist is not responsible for any damage on the system as long as this is related to under-dimensioned PA. The sound system must be rigged and tested before the artist's sound engineer arrives the venue. The artist's sound engineer needs a dedicated system technician that is properly familiar with the PA-system, power conditions and the routines at the venue. This person needs to be present at get-in, sound check, concert and load-out and is responsible for all rigging of the equipment delivered by the venue.

### MIXER:

Min 32 ch (w/full EQ and all aux. available), 4 band parametric EQ, minimum 2 «sweep-able» parameters, insert, variable hi-pass filter. Min.8 aux: 5 mon (pre), 5 FX (post) Min. 6 groups w/inserts.

Preferred mixers: Midas H2000/3000, VI1/VI4/VI6 ,Pro2/Pro6/9 The mixer needs to be located in the center of the audience area.

We prefer digital consoles.

### EFFECTS:

1 x high quality vocal reverb. Preferred: Lexicon 480/960/PCM91, TC M-5000 or similar. 1 x reverb for guitar. Preferred: PCM91/SPX 90/990/2000 or similar. High quality comp. DBX160, Drawmer, BSS. 31 band graphic EQ for all monitor channels and FOH. Preferred: Klark DN 360, BSS FDS 360

### Monitors:

4Ch stereo in ear monitor. Ex Shure Psm 1000

PANTA REI DANCE THEATER / "ON THE OUTSIDE" / TECHNICAL RIDER

<b>CH</b>	<b>Instr</b>	<b>Mic</b>	<b>Insert</b>	<b>Stand</b>
<b>1</b>	Basstromme	DI	Comp	
<b>2</b>	Basstromme	DI	Comp	
<b>3</b>	Skarptromme	DI	Comp	
<b>4</b>	Tammer L	DI	Comp	
<b>5</b>	Tammer R	DI	Comp	
<b>6</b>	OH L	DI	Comp	
<b>7</b>	OH R	DI	Comp	
<b>8</b>	Bassgitar	DI	Comp	
<b>9</b>	Ole L	DI	Comp	
<b>10</b>	Ole R	DI	Comp	
<b>11</b>	Prophet L	DI	Comp	
<b>12</b>	Prophet R	DI	Comp	
<b>13</b>	Synth L	DI	Comp	
<b>14</b>	Synth R	DI	Comp	
<b>15</b>	Clavia L	DI	Comp	
<b>16</b>	Clavia R	DI	Comp	
<b>17</b>	Tracks L	DI	Comp	
<b>18</b>	Track R	DI	Comp	
<b>19</b>	Hilde vokal	DPA Dfacto	Comp	Høyt galge

**9. LOCAL CREW:**

Hanging of lights, soft goods, building small stages:

*(If not already done in advance of Panta Rei Dance Theater get in.)*

Minimum 2 lighting technicians + 2 stage technicians.

*Expect approximately 6 hours – depending on venue and local crew.*

Set up & preparations:

1 lighting technician, 1 sound technician, 1 stage technician.

*Expect approximately 3-4 hours*

Lighting focus:

2 lighting technicians

*Expect approximately 3 hours.*

Spacing, rehearsals & show:

1 lighting technician, 1 sound technician

Strike/tear down:

1 lighting technician, 1 sound technician, 1 stage technician.

*Expect approximately 90 minutes*

**10. SCHEDULE:**

The schedule will be different from venue to venue and details will be agreed closer to the company get in.

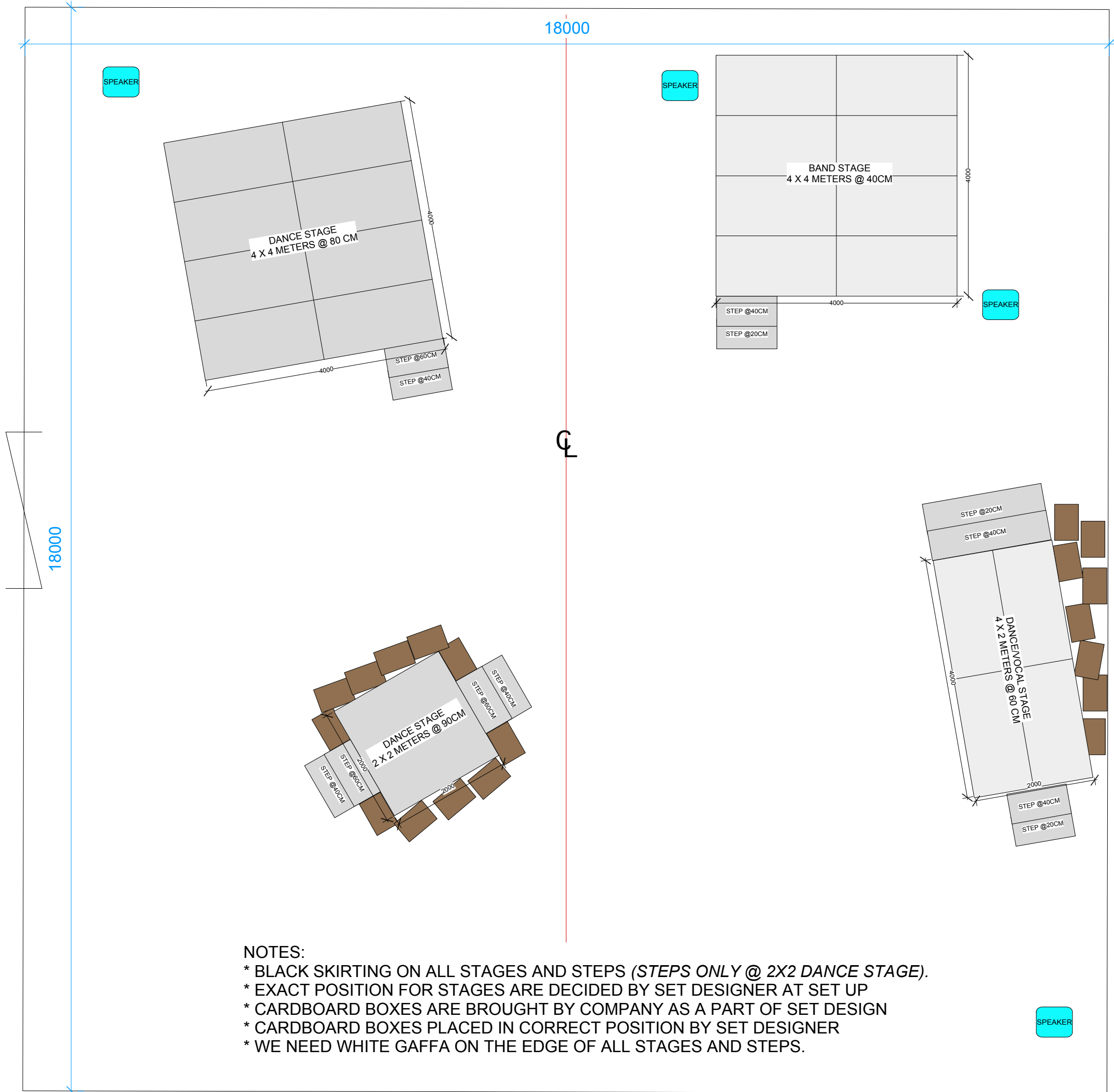
**Questions, problems or comments? Do not hesitate to get in touch.**

Pia Holden

Cell: +47 92 09 88 97

email:pia@pantareidanseteater.com





**NOTES:**

- \* BLACK SKIRTING ON ALL STAGES AND STEPS (STEPS ONLY @ 2X2 DANCE STAGE).
- \* EXACT POSITION FOR STAGES ARE DECIDED BY SET DESIGNER AT SET UP
- \* CARDBOARD BOXES ARE BROUGHT BY COMPANY AS A PART OF SET DESIGN
- \* CARDBOARD BOXES PLACED IN CORRECT POSITION BY SET DESIGNER
- \* WE NEED WHITE GAFFA ON THE EDGE OF ALL STAGES AND STEPS.

Instruments	Count	Instruments	Count
JTE Flood, 1kW	04	S4 JR 25°-50°, 575W	08
Par64 CP62, 1kW	16	S4 Zoom 15°-30°, 700W	01
Selecon fresnel, 1kW (with barn doors)	02	Small work light (company brings)	12
Selecon fresnel, 2kW (with barn doors)	02	Par56 (company brings)	06
LED bar, RGBW	06	Clay Paky 700 SPOT (or similar)	04
		Clay Paky 700 WASH (or similar)	04

GELS
L020
L079
L201
L202
L204

Please have blackwrap and blacklax available for focus.

LEGEND
COLOR
PURPOSE
CHANNEL

**Panta Rei Dance Theater - "On the outside"**

TOURING

**GROUND PLAN / LIGHTING HUNG / LIGHTING FLOOR**



CHOREOGRAPHY: Anne Holck Ekenes & Pia Holden

email: [pia@pantareidanseteater.com](mailto:pia@pantareidanseteater.com)

---

CONTACT:

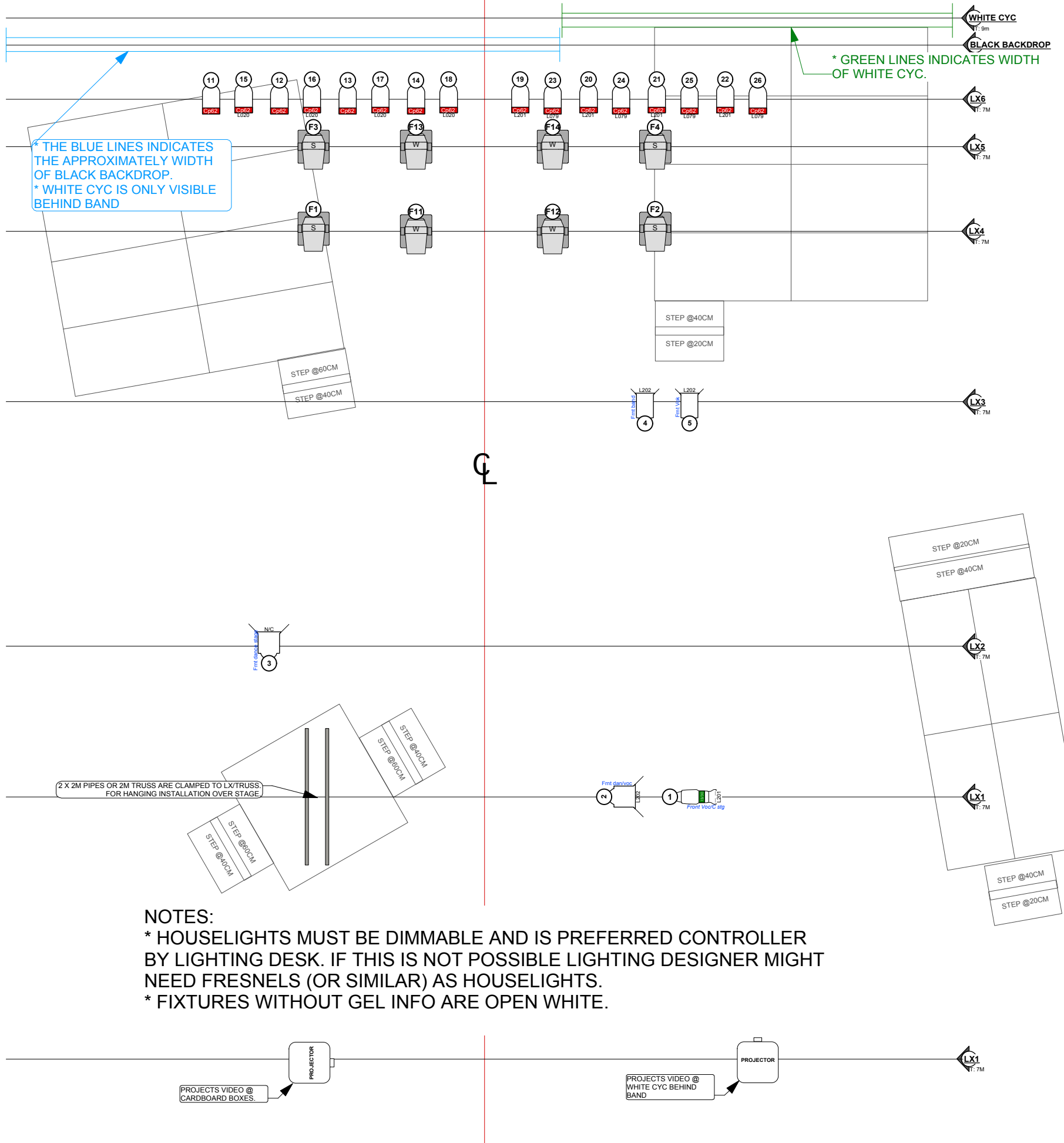
Pia Holden

email: [pia@pantareidanseteater.com](mailto:pia@pantareidanseteater.com) phone: +47 92 09 88 97

---

DRAWN BY: DKG DATE: 17/10/14





**NOTES:**  
 \* HOUSELIGHTS MUST BE DIMMABLE AND IS PREFERRED CONTROLLER BY LIGHTING DESK. IF THIS IS NOT POSSIBLE LIGHTING DESIGNER MIGHT NEED FRESNELS (OR SIMILAR) AS HOUSELIGHTS.  
 \* FIXTURES WITHOUT GEL INFO ARE OPEN WHITE.

Instruments	Count	Instruments	Count
JTE Flood, 1kW	04	S4 JR 25"-50", 575W	08
Par64 CP62, 1kW	16	S4 Zoom 15"-30", 700W	01
Selecon fresnel, 1kW (with barn doors)	02	Small work light (company brings)	12
Selecon fresnel, 2kW (with barn doors)	02	Par56 (company brings)	06
LED bar, RGBW	06	Clay Paky 700 SPOT (or similar)	04
		Clay Paky 700 WASH (or similar)	04

GELS
L020
L079
L201
L202
L204

Please have blackwrap and blackback available for focus.

LEGEND
COLOR PURPOSE
CHANNEL

**Panta Rei Dance Theater - "On the outside"**  
 TOURING

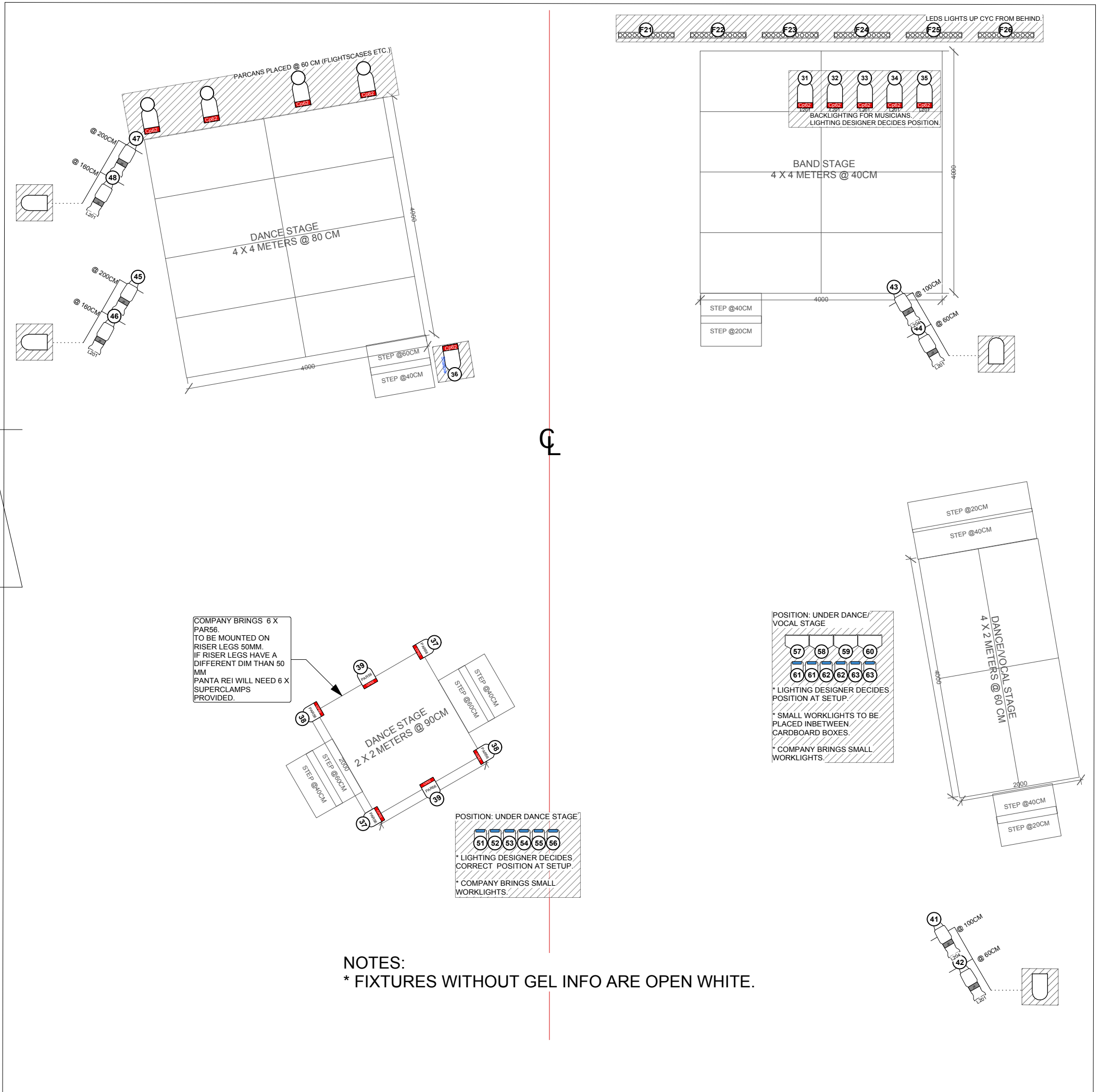
**GROUND PLAN / LIGHTING HUNG / LIGHTING FLOOR**

CHOREOGRAPHY: Anne Holck Ekenes & Pia Holden  
 email: [pia@pantareidanseteater.com](mailto:pia@pantareidanseteater.com)

CONTACT:  
 Pia Holden  
 email: [pia@pantareidanseteater.com](mailto:pia@pantareidanseteater.com) phone: +47 92 09 88 97

DRAWN BY: DKG DATE: 17/10/14





Instruments	Count	Instruments	Count
JTE Flood, 1kW	04	S4 JR 25°-50°, 575W	08
Par64 CP62, 1kW	16	S4 Zoom 15°-30°, 700W	01
Selecon fresnel, 1kW (with barn doors)	02	Small work light (company brings)	12
Selecon fresnel, 2kW (with barn doors)	02	Par56 (company brings)	06
LED bar, RGBW	06	Clay Paky 700 SPOT (or similar)	04
		Clay Paky 700 WASH (or similar)	04

GELS
L020
L079
L201
L202
L204

Please have blackwrap and blacklax available for focus.

**LEGEND**

COLOR PURPOSE CHANNEL

**Panta Rei Dance Theater - "On the outside"**

TOURING

**GROUND PLAN / LIGHTING HUNG / LIGHTING FLOOR**

CHOREOGRAPHY: Anne Holck Ekenes & Pia Holden  
email: pia@pantareidanseteater.com

CONTACT:  
Pia Holden  
email: pia@pantareidanseteater.com phone:+47 92 09 88 97

DRAWN BY: DKG DATE: 17/10/14