

Panta Rei Danseteater
Technical Rider for “Private Rite” and “WeFiction”



Contact information

Technician:

Mari Røsjo

Telephone number: +47 951 18 622

Mail: marirosjo@gmail.com

Managing director:

Pia Holden

Telephone number: + 47 920 98 897

Mail: pia@pantareidanseteater.com

Required personnel

We require one lighting technician and one sound technician with good knowledge of the equipment at the venue. They also have to help us with the load in and load out. It is necessary that both technicians are available at all times. The lighting technician has to run the show, cued by Pia and Mari. Mari will run the sound.

At arrival

The venue have to be at least 22°C at all time. The floor must be clean at get in, and the stage must be empty.

Schedule

Get in: 10 hours before performance

Set-up time: 8 hours

Rehearsals: 2 hours before performance

Performance program:

“Private Rite”: 23 minutes

Intermission: approximately 20 minutes (when showing a small piece, 4 min), 15 minutes (if not showing the small piece)

“WeFiction”: 21 minutes

Get out starts immediately after performance

The estimated time for load out is 2 hours

Measurements

The required performance space is 8x8 meters. The performance space has to be covered with a black linoleum dance floor. Proscenium height has to be at least 5 meters.

The side stage area needs to be minimum 3 meters on each side.

Audience seating

The ideal performance setting is to perform “in the round”. This means that we would like to have the audience seated on all four sides of the stage. We can normally fit 160 audience members with two rows on each of the four sides. Three of the seats on the first row must be reserved for the dancers. If an “in the round” performance is not possible we can also perform with the audience on two or three sides, and even in a proscenium arch theatre.

Lights

All listed fixtures are required from the venue. We bring four light chains that need two dimmable outputs on stage floor level. In the event of an “in the round” performance the mixing consoles must be positioned on stage, behind the audience, wherever it’s most practical and out of the way. We bring our own gels. See attached drawing/plot.

Sound

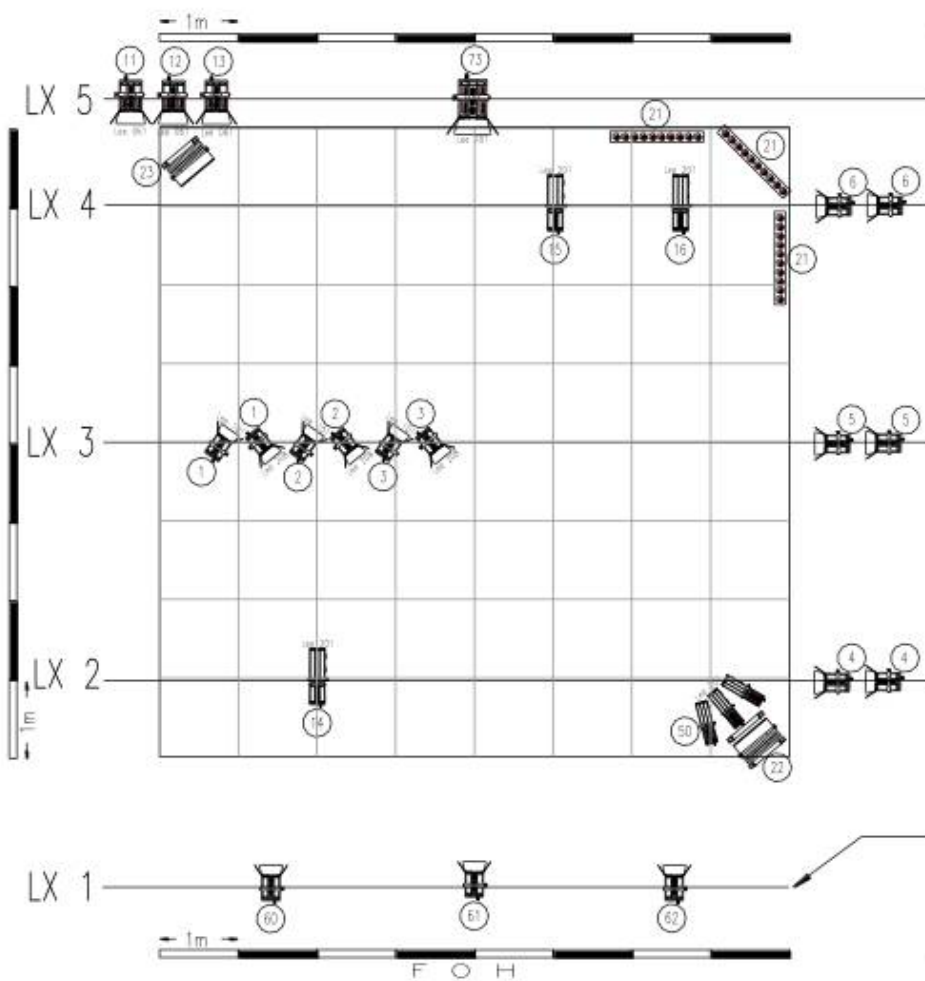
We need a PA system with at least two subs and two tops/tweeters. Full spectrum is desired with bass bins and all range of the speakers. We need enough PA to cover the whole audience area on all four sides. Preferably we would like D&B, L’Acoustics, Nexo or Meyer. When there’s not an “in the round” performance we need 4 monitors, one on each side. We also need graphical equalizers for the PA and the monitors. However this is a wish but not required to book the performance.

We would like to be able to move the speakers around to get the best stereo feel. This is in regards to the piece being presented to all four sides. We bring a Macintosh computer that we run the music from.

Other requirements

Changing room with mirrors and showers.

Please contact us if there are any questions regarding this rider.



Note	
Performer	Panta Rei Danstheater
Performance	"WeFiction" & "Private Rite"
Light Design	Tilo Hahn
All fixtures must be complete with knives, barndoors and gel frames. Technical control seating can be situated in the most practical position for the venue.	
Key	
	1 x 5kW Fresnel or 2 x 2kW Fresnel
	3 x 2kW Fresnel
	15 x 1kW Fresnel
	3 x 1kW Profile, narrow 10-30 with iris
	3 x 650W Profile, wide 25-50
	2 x 1kW Floodlight
	3 x Striplight or 3 x 1kW Floodlights
	650W profiles, floodlights and striplights are placed on floor and needs stands
2 x additional dimmable channels on floor must be available.	
Front lights are used if played in a proscenium arch theatre.	
Proscenium height must be minimum 5m.	