

# Panta Rei "Lullaby"



## Technical Rider

---

Attached is a technical Rider covering contact information, schedule, technical and practical requirements. Changes may occur.

### **Contact information:**

---

Managing director:

Pia Holden

Telephone number: + 47 920 98 897

Email: [pia@pantareidanseteater.com](mailto:pia@pantareidanseteater.com)

Technical manager:

Peter Albers

Telephone number: +47 415 61 728

Email: [peter.brian.albers@gmail.com](mailto:peter.brian.albers@gmail.com)

### **Schedule:**

---

- Get in: minimum 8 hours before performance
- Set-up time: 6 hours
- Rehearsals: 2 hours before performance
- Estimated time for load out: 2 hours

Act 1: 30min Concert intermission: 15min Act 2: 30min
---

### **Arrival**

---

- On arrival we require parking in immediate vicinity to the venue and necessary parking permits. We need a clean stage, backstage and technical seating. Pipes/grid must be stripped and ready for rig. Temperature on stage must be minimum 22 degrees Celsius at all time.

### **Staff**

---

- On arrival we require 1 sound technician and 1 light technician. Both technicians must assist company at load in and load out, have good knowledge of the technical infrastructure and be available at all times for rigging and assistance during performance.

## ***Audience seating***

---

Please specify in advance the type of venue, audience seating and all stage measurements in advance. The ideal setting is to perform in a proscenium arch theatre or a black box.

## ***Stage measurements***

---

- The required performance area is 8m x 8m plus 3m side stage on each side.
- Minimum proscenium height is 5m.
- If stage has walls or objects with light colours or windows with transparent curtains, please cover with lightproof black molton/textile.

## ***Stagecraft***

---

- The company require:
  - 5 flybars/pipes for lighting units according to the light plot.
  - A ladder or lift with working height minimum 5m.
  - Black linoleum dance floor covering the performance area.
  - 4 heavy duty stage risers á 2m x 1m with height 40cm.
  - All stagecraft equipment must be controlled and approved according to current regulations.
  - All fire detectors in the venue must be deactivated during rehearsals and performance.

Note: If flybars/pipes is not installed, a truss with ground support can be used. Please contact the company.

## ***Sound***

---

- The company require:
  - A piano or grand piano in good tune. And two music stands and two piano chairs.

Note: In larger venues with sound absorbing material and short reverb time, the grand piano and cello needs to be amplified. In this case the productions need a good quality full spectrum PA/SR system covering all audience seating and a sound engineer to run the sound.

## ***Lighting***

---

The company will need help rigging and focusing the lights according to the light plot.

- The company require:

- 53 dimmer channels and outlets to flybars/pipes.
- 24 x PAR64 with CP62
- 24 x PAR64 with CP61
- 14 x 500W floods or working lights with preferably symmetric reflector.  
Mounted on shins/floor stands.
- 9 x 1kW Fresnels
- Good quality hazer

## ***Wardrobes***

---

Note: If dimmable houselights are available please contact the company.

If prerig is possible please contact the company. The company will bring a lighting controller with 1 universe DMX output.

All fixtures must be complete with security wire, barn doors and gel frames. Spare bulbs for all units must be within reach.

- The company consists of 3 dancers, 2 musicians, 1 tour manager and 1 technical manager. The company will need at least 2 wardrobes with mirrors with good lighting, adjoining toilets and showers.

## ***Food***

---

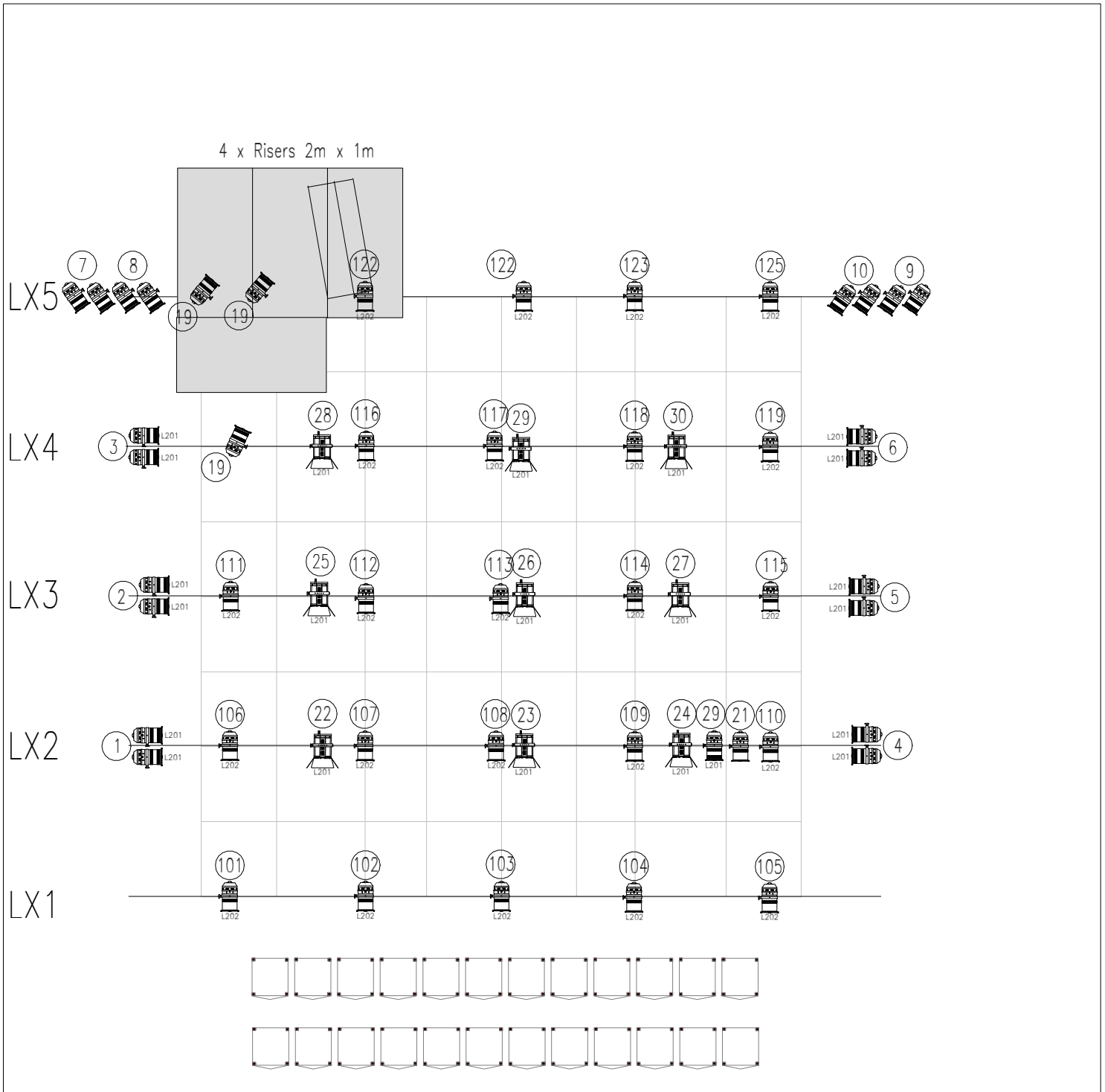
On arrival:

- Bottled water and fresh fruit for 5 people.

## ***Load-out***

---

- We wish to perform load out as soon as possible after performance. Estimated load out time is 2 hours.



**Note**

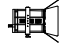



**Performer**    Panta Rei Danseteater

**Performance**    "Lulleby"

**Light Design**    Joakim Brinck

All fixtures must be complete with security wire barn doors and gel frames. Spare bulbs for all units must be within reach.

**Key**

-  9 x 1kW Fresnell
-  14 x Working lights/floods
-  24 x PAR64 CP62
-  24 x PAR64 CP61